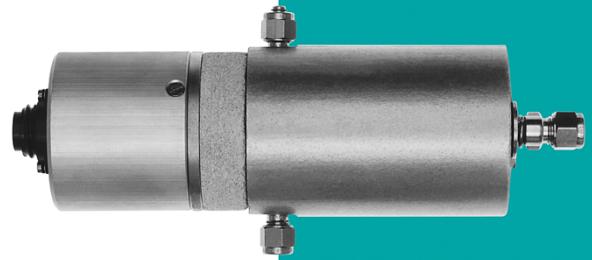


FID-Accessoires

Datasheet Filter Model 1004C/2BV



Description

The heated prefilter model 1004C/1V is a sample gas filter for the high temperature applications with a permanent temperature of 300°C. The filter is very stable with the temperature level you preselect, and also in permanent operation. In permanent use the maximum temperature is 300°C. The temperature is regulated in a range of $\pm 1\%$.

Application

This filter is used as an allround model for emission monitoring and also in motor testing applications. The particles are hold back before the transfer lines and for this the whole analyzer-system is protected against small particles and aerosols from exhaust gas. The built in titan filter element is very easy to replace and also easy to clean. The temperature of 200/300°C and the quick heating up temperature shows you the advantages in daily use.

Technical Data Model 1004C/2BV

Sampleflow:	15 liter/min
Gasconnections:	6 mm Swagelok Option 8mm
Exhaust gas temp.: Maximum	600 - 800°C
Power consumption:	320 W during the heating period
Filter element:	5 μ Standard 1 μ Option
Solenoid valve:	3-2- Way MV Flashback MV
Thermocouple:	PT 100 or NiCrNi
Dimensions and weight:	
Weight:	3 kg
Diameter Filter:	70mm
Length over all:	260mm