

CONTROLTECNICA

AFI presents
THE GENERATION

LOREENA

MULTILAB CENTRIFUGES 4I



**Made in
France**

AFI
Groups

Smaller in Size, but BIG on Capacity

The AFI range centrifuges offers the largest capacity available relative to its footprint.

Designed around you and your applications, the MultiLab AFI centrifuge range with amazing footprint. Help to save you more bench space while improving safety.

Our rotors are designed to reach high speed performances and low noise level. This construction technique allows AFI to focus on adding more capacity with more speed.

Capacities to Maximize your Work-flow.

The CLICKSPIN System provides the Best Flexibility System to change Applications.



CLiCK*SPIN

Click-Spin patented technology will allow you to exchange rotors in the simplest and fastest way possible; no tools are needed! Align the rotor with the motor shaft and it will sit and lock itself. Once installed, an audible "CLICK" will ensure you the rotor is correctly seated.

When switching rotors per application, grasp the red dial of the rotor and twist counter-clockwise while anchoring the body of the rotor. An audible "CLICK" will sound, and your rotor will then be unlocked from the motor shaft. You can now quickly remove it and install your new rotor.

Click-Spin technology is Available on AFI MultiApps centrifuges only.



New Bio-Lid Design

The unique design of our lids allows you to open and close the buckets with a single hand, and they can also be installed and removed directly in the bowl.

Routine Cleaning Made Easy

Contamination can hide in the tightest of places. The ability to remove a rotor within seconds makes the routine cleaning of the centrifuge bowl easy.

Application Flexibility

The simple action of a twist allows the rotor to be removed within seconds. Start a new application by placing a new rotor over the shaft. An audible "CLICK" notifies a user the rotor has been securely locked.

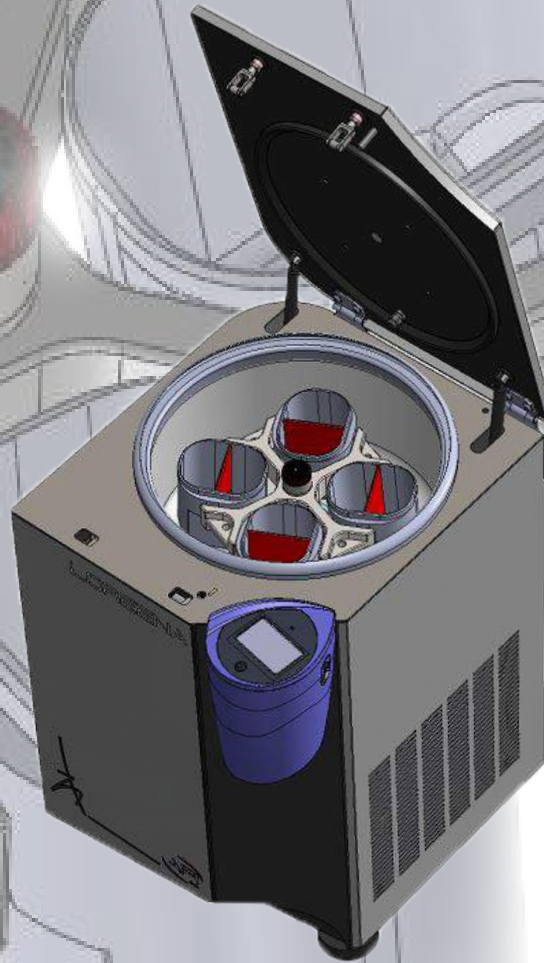
Security

The automatic locking feature allows a rotor to be securely installed without the worry of damage to the centrifuge.

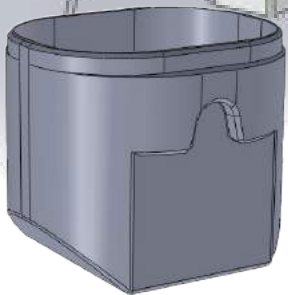
BLOOD BANK APPS

LOREENA, Blood Bank application ALL in ONE !

Introducing the NEW LOREENA Apps centrifuge designed for flexible, large capacity blood banking.

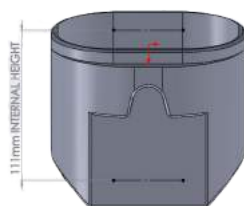
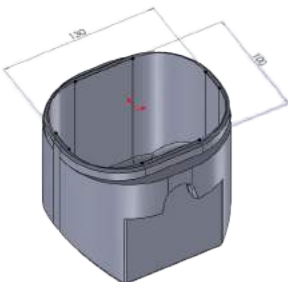


5

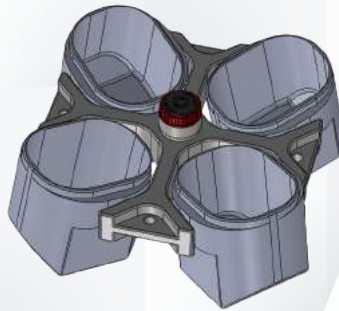


BUCKETS, studied for your blood bank applications

- Max load 1000ml
- Max Speed 4600 rpm/4636 g
- Special design can be use without Liner
- Accessories Tricks on demand



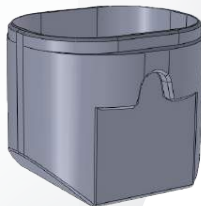
Blood bank processes, why not with your LOREENA!



AFI-RX750

Multi-application, round or oval buckets.
Speed max 4600rpm/4636g

Max load 1000 ml or 144 blood tubes



AFI-BO750

Oval Bucket 1000 ml - set of 4



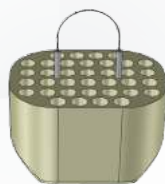
AFI-TRICKS-#1

Partition Bucket



AFI-TRICKS-#2

Silicone spacer



AFI-3TO5

Adapters 36 x 5 ml blood collection tubes for
blood bag bucket - Set of 4



AFI-3TO50C

Adapters 7 x 50 ml blood collection tubes for
blood bag bucket - Set of 4

GAMME 3 L TO 4 L



LOREENA

Minimized FootPrints, Maximized Ergonomics

- Bench Top and Floor Model MultiLab Centrifuge
- 4 L capacity Max (4 x 1000mL)
- Multi-laboratory settings, **CLICK*SPIN** Innovation
- Touchscreen Commands and 4/3 Graphic Color Screen
- 14 Optional Rotors
- Dimensions Refrigerated Model
 - Height : 35 cm
 - Width : 77 cm
 - Depth : 63 cm
- Dimensions Refrigerated Floor Model
 - Height : 83 cm
 - Width : 57 cm
 - Depth : 64 cm
- Dimensions Ventilated Model
 - Height : 37 cm
 - Width : 50 cm
 - Depth : 61 cm

Swinging Bucket Rotors



LOREENA Accessories	RX-750	RX-1000	RH-DW	PlateFORM
Maximum Capacity (ml)	4 x 750 ml	4 x 1000 ml	8 Microplates	28 Microplates
Maximum Speed (rpm)	4.600 rpm	3.500 rpm	4.600 rpm	3.700 rpm
Maximum RCF (x g)	4.731 x g	2.751 x g	3.690 x g	2.510 x g
Biocontaiment	✓	✓	✓	

COMING SOON!

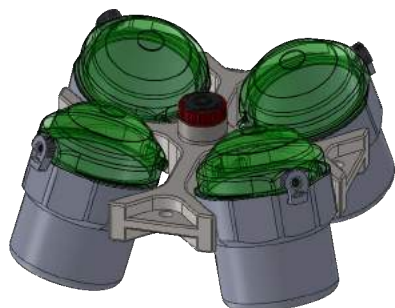
COMING SOON!



1000mL AFI Flat Bottle	-	4	-	-
750mL Flat Bottle	4	4	-	-
625mL AFI Flat Bottle	4	4	-	-
500mL Flat Bottle	4	4	-	-
500mL Conical Bottle	4	4	-	-
400 mL Flat Bottle	4	-	-	-
290mL Flat Bottle	4	8	-	-
250mL Flat Bottle	4	8	-	-
250mL Conical Bottle	4* *unsealed	8	-	-
200mL Flat Bottle	4	8	-	-
200mL Conical Bottle	4	8	-	-
150mL Conical Bottle	4	8	-	-
100mL Conical Bottle	4 *8 unsealed	8	-	-
50mL Conical Tube	24 *28 unsealed	40	-	-
50mL Skirted Conical Tube	24 *28 unsealed	40	-	-
50mL AOR Advanced Oak Ridge	24 *28 unsealed	40	-	-
30mL Skirted Conical Tube	28	40	-	-
14mL Urine Tube	84	156	-	-
15mL Conical Tube	56	96	-	-
15mL CPT Cell Preparation Tube	32	-	-	-
10mL Blood Collection Tube	84	156	-	-
5-7mL Blood Collection Tube	108	200	-	-
1,5 - 2mL MicroTube	216	200	-	-
Standard Microplate	16	24	8	28
DeepWell Microplate	4	8	2	8

Rotors and Adapters

For Swinging Buckets rotors



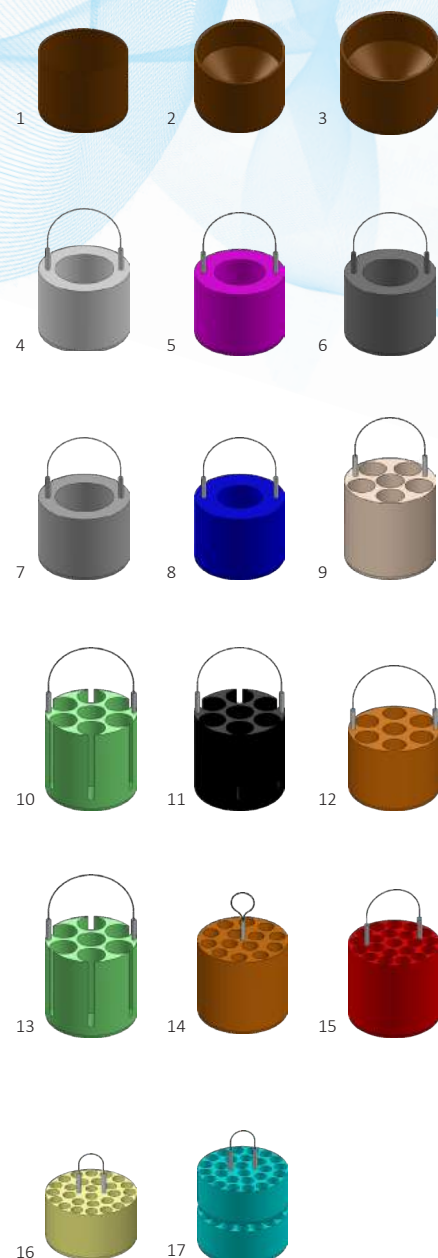
RX-750 Swinging Bucket Rotor

Centrifuge	Model	Maximum Speed (rpm)	Maximum RCF (x g)
AFI MultiLab LOREENA	R	4.600	4.731
	V	4.500	4.256



3 L

Cat N°	Adapter image	Description	Rotor capacity	Max tube Dimensions (ø x L mm)
Rotor				
NU-RX750	-	Swinging Bucket Rotor cross	-	-
NU-B750	-	Round Buckets (set of 4)	-	-
NU-L750	-	Biosafety secured lid for B750 set of 4	-	-
NU-BXDW3	-	Microplates carriers and Flask (set of 4)	20	-
Accessories Kits				
AFI-BPP750	-	750 mL Polypropylene Flat Bottle	-	-
AFI-BPP625	-	625 mL Polypropylene Flat Bottle (Exclusivity)	-	-
AFI-BPP400	-	400 mL Polypropylene Flat Bottle	-	-
AFI-TXDW3	-	Micoplates Extractors (Include pads) for BXDW3	-	-
71199012	-	Tube of grease 20gr	-	-
71123501	-	Replacement Kit NU-L750 O-rings for lids set of 4	-	-
Adapters set of 4 (possibility sets of 2)				
AFI-3T750F	-	750 mL Flat Bottle	4 x 750 mL	98x135
AFI-3T625F	1	625 mL Flat Bottle (AFI)	4 x 525 mL	92x136
AFI-3T500F	1	500 mL Flat Bottle	4 x 500 mL	92x136
AFI-3T500C	2	500 mL Conical Bottle	4 x 500 mL	92x136
AFI-3T400F	3	400 mL Flat Bottle	4 x 400 mL	100.5 x 145
AFI-3T290F	4	290 mL Flat Bottle	4 x 290 mL	62x148
AFI-3T250F	4	250 mL Flat Bottle	4 x 250 mL	62x148
AFI-3T250C	5	250 mL Conical Bottle (Without Lid bucket)	4 x 250 mL	60x149
AFI-3T200F	6	200 mL Flat Bottle	4 x 200 mL	56x150
AFI-3T200C	7	200 mL Conical Bottle	4 x 200 mL	60x149
AFI-3T200C	7	150 mL Conical Bottle	4 x 150 mL	60x149
AFI-3T100C	8	100 mL Conical Bottle	4 x 100 mL	56x150
AFI-3T50CL	9	50 mL Conical Tube	24 x 50 mL	30x134
AFI-3T50C	10	50 mL Conical Tube (Without Lid bucket)	28 x 50 mL	30x132
AFI-3T50AOR	9	50mL AOR Advanced Oak Ridge	24 x 50 mL	29x134
AFI-3T50S	11	50 mL Skirted Conical Tube (Without Lid bucket)	28 x 50 mL	30x137
AFI-3T50SL	12	50 mL Skirted Conical Tube	24 x 50 mL	30x134
AFI-3T30S	13	30mL Skirted Conical Tube	28 x 30 mL	25x140
AFI-3T15C	14	15mL Conical Tube	56 x 15 mL	17x135
AFI-3T10	15	14mL Urine Tube	84 x 14 mL	16x134
AFI-3T10	15	10mL Blood Collection Tube	84 x 14 mL	16x134
AFI-3T5	16	5-7mL Blood Collection Tube	108 x 5 mL	12x133
AFI-3T2	17	1,5 - 2mL MicroTube	216 x 2 mL	11x50

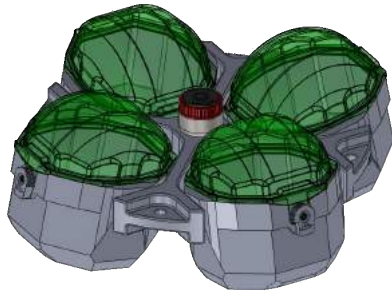


Rotors and Adapters

For Swinging Buckets rotors



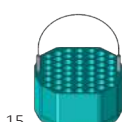
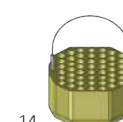
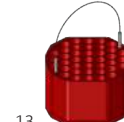
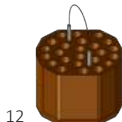
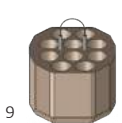
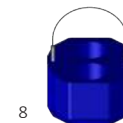
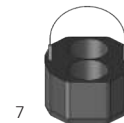
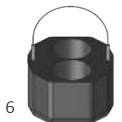
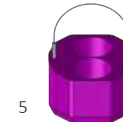
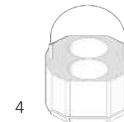
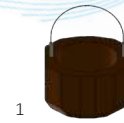
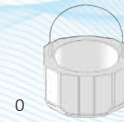
RX-1000 Swinging Bucket Rotor



4 L

Centrifuge	Model	Maximum Speed (rpm)	Maximum RCF (x g)
AFI MultiLab	R	3.500	2.751
LOREENA	V	3.500	2.751

Cat N°	Adapter image	Description	Rotor capacity	Max tube Dimensions (ø x L mm)
Rotor				
NU-RX1000	-	Swinging Bucket Rotor cross	-	-
NU-B1000	-	Buckets (set of 4)	-	-
NU-L1000	-	Biosafety secured lid for B1000 set of 4	-	-
NU-BXDW4	-	Microplates carriers and Flask "SEALED"	24	-
Accessories Kits				
AFI-BPP-1000	-	1000 mL Polypropylene Flat Bottle	-	-
AFI-BPP750	-	750 mL Polypropylene Flat Bottle	-	-
AFI-BPP625	-	625 mL Polypropylene Flat Bottle (Exclusivity)	-	-
AFI-BPP400	-	400 mL Polypropylene Flat Bottle	-	-
AFI-TXDW4	-	Micoplates Extractors (Include pads) for BXDW4	-	-
71199012	-	Tube of grease 20gr	-	-
71123502	-	Replacement Kit NU-L1000 O-rings for lids set of 4	-	-
Adapters set of 4 (possibility sets of 2)				
AFI-4T1000F	0	1000 mL Flat Bottle	4 x 1000 mL	112,5x142
AFI-4T750F	1	750 mL Flat Bottle	4x 750 mL	98x138
AFI-4T625F	2	625 mL Flat Bottle	4 x 625 mL	92x140
AFI-4T500F	2	500 mL Flat Bottle	4 x 500 mL	92x140
AFI-4T500C	3	500 mL Conical Bottle	4x 500 mL	92x140
AFI-4T290F	4	290 mL Flat Bottle	8 x 290 mL	62x123
AFI-4T250F	4	250 mL Flat Bottle	8 x 250 mL	62x123
AFI-4T250C	5	250 mL Conical Bottle (Without Lid bucket)	8 x 250 mL	60x124
AFI-4T200F	6	200 mL Flat Bottle	8 x 200 mL	56x126
AFI-4T200	7	200 mL Conical Bottle	8 x 200 mL	60x124
AFI-4T200	7	150 mL Conical Bottle	8 x 150 mL	60x124
AFI-4T100-C	8	100 mL Conical Bottle	8 x 100 mL	56x126
AFI-4T50C	9	50 mL Conical Tube	40 x 50 mL	30x121
AFI-4T50AOR	9	50mL AOR Advanced Oak Ridge	40 x 50 mL	29x121
AFI-4T50S	10	50 mL Skirted Conical Tube	28 x 50 mL	30x133
AFI-4T30S	11	30mL Skirted Conical Tube	40 x 30 mL	30x128
AFI-4T15C	12	15mL Conical Tube	96 x 15 mL	17x123
AFI-4T10	13	14mL Urine Tube	156 x 14 mL	16x128
AFI-4T10	13	10mL Blood Collection Tube	156 x 10 mL	16x128
AFI-4T5	14	5-7mL Blood Collection Tube	200 x 5 mL	12x127
AFI-4T2	15	1,5 - 2mL MicroTube	200 x 2 mL	11x50



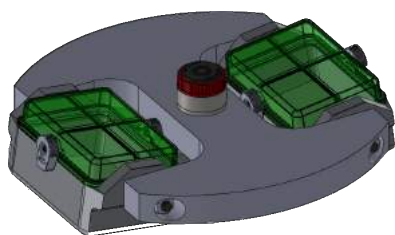
10

Rotors and Adapters

For Microplates Applications



RHDW swinging Bucket Rotor



Centrifuge	Model	Maximum Speed (rpm)	Maximum RCF (x g)
AFI MultiLabs	R	4.600	3.690
LOREENA	V	4.000	2.987

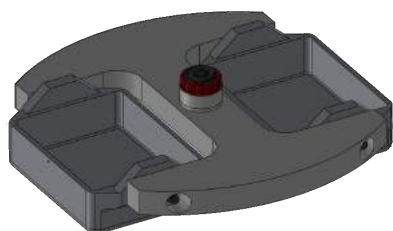
Cat N°	Description	Rotor capacity	Maximum Height
Rotor			
NU-RHDW	Swinging Bucket Rotor cross	-	-
NU-BHDW	Microplate Carrier	2 x 4 Microplates 2 x 1 Deep-Well	63
NU-LH	Biosafety secured lid for BHDW set of 2	-	-
Accessories Kits			
71199012	Tube of grease 20gr	-	-

Rotors and Adapters


For Microplates Applications



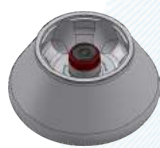
PlateFORM Swinging Bucket Rotor



Centrifuge	Model	Maximum Speed (rpm)	Maximum RCF (x g)
AFI MultiLabs	R	3.700	2.510
LOREENA	V	-	-

Cat N°	Description	Rotor capacity	Maximum Height
Rotor			
NU-RHD3	Swinging Bucket Rotor cross	-	-
NU-BHD3	Microplate Carrier	2 x 14 Microplates 2 x 2 Deep-Well	68
AFI-3TD5	 Veterinary adapters pack	-	86
AFI-3TD5-E	Automatic Tube Opening System	-	86
Accessories Kits			
71199012	Tube of grease 20gr	-	-

Fixed angle rotors

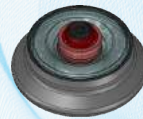


LOREENA Accessories	RA-6x250	RA-6x100	RA-8x50	RA-8x50 Sealed*
Maximum Capacity (ml)	6 x 250 mL	6 x 100 mL	8 x 50 mL	8 x 50 mL
Maximum Speed (rpm)	11.000 rpm	13.200 rpm	12.100 rpm	7.600 rpm
Maximum RCF (x g)	19.882 x g	20.634 x g	16.663 x g	9.090 x g
Biocontainment	✓			✓

* Fixe Angle Rotor

	250mL Bottle	6	-	-	-
	100mL Conical Bottle	6	-	-	-
	80mL AOR Advanced Oak Ridge	6	6	-	-
	50mL Conical Tube	6	6	8	8
	50mL AOR Advanced Oak Ridge	6	6	8	8
	30mL AOR Advanced Oak Ridge	12	6	8	8
	15mL Conical Tube	30	6	8	8
	10mL AOR Advanced Oak Ridge	42	12	16	8
	10mL Blood Collection Tube	42	12	16	8
	5-7mL Blood Collection Tube	-	12	-	8
	5mL MicroTube	-	12	-	-
	1,5 - 2mL MicroTube	-	24	-	-
	0,5mL MicroTube	-	-	-	-
	0,25mL MicroTube	-	-	-	-
	0,2mL MicroTube	-	-	-	-

Fixed angle rotors



LOREENA Accessories	RA-30x15	RA-16x5	RA-48x2	RA-30x2
Maximum Capacity (ml)	30 x 15 mL	16 x 5 mL	48 x 2 mL	30 x 2 mL
Maximum Speed (rpm)	4.600 rpm	13.200 rpm	15.500 rpm	16.000 rpm
Maximum RCF (x g)	3.894 x g	20.018 x g	27.073 x g	28.198 x g
Biocontainment		✓	✓	✓



250mL
Bottle

-

-

-

-



100mL Conical Bottle

-

-

-

-



80mL AOR
Advanced Oak Ridge

-

-

-

-



50mL
Conical Tube

-

-

-

-



50mL AOR
Advanced Oak Ridge

-

-

-

-



30mL AOR
Advanced Oak Ridge

-

-

-

-



15mL
Conical Tube

30

-

-

-



10mL AOR
Advanced Oak Ridge

30

-

-

-



10mL Blood
Collection Tube

30

-

-

-



5-7mL Blood
Collection Tube

30

-

-

-



5mL
MicroTube

-

16

-

-



1,5 - 2mL
MicroTube

-

-

48

30



0,5mL
MicroTube

-

-

48

30



0,25mL
MicroTube

-

-

48

30



0,2mL
MicroTube

-

-

48

30

Fixed angle rotors



Angular Rotor 6x250 - 28°



Centrifuge	Model	Maximum Speed (rpm)	Maximum RCF (x g)
AFI MultiLab	R	11.000	19 882
LOREENA	V	11.000	19 882

Cat N°	Description	Rotor capacity	Max tube Dimensions (ø x L mm)
Rotor			
NU-RA6-250	Angular Rotor	6 x 250 mL	62x125
Accessories Kits			
AFI-BPP-250	250 mL Polypropylene Bottle set of 20	6 x 250 mL	-
AFI-BPC-250	250 mL Polycarbonate Bottle set of 20	6 x 250 mL	-
Adapters			
AFI-250R100-C	100mL Conical Bottle	6 x 100mL	56x125
AFI-250R80-OAK	80mL AOR Advanced Oak Ridge	6 x 80mL	38x125
AFI-250R50-C	50mL Conical Tube	6 x 50mL	30x125
AFI-250R50-OAK	50mL AOR Advanced Oak Ridge	6 x 50mL	29x125
AFI-250R30-OAK	30mL AOR Advanced Oak Ridge	12 x 30mL	25x125
AFI-250R15-C	15mL Conical Tube	30 x 15mL	17x121
AFI-250R10-OAK	10mL AOR Advanced Oak Ridge	42 x 10mL	17x110
AFI-250R10	10mL Blood Collection Tube	42 x 10mL	17x110

15

Angular Rotor 6x100 - 28°



Centrifuge	Model	Maximum Speed (rpm)	Maximum RCF (x g)
AFI MultiLab	R	13.200	20.634
LOREENA	V	12.700	19.100

Cat N°	Description	Rotor capacity	Max tube Dimensions (ø x L mm)
Rotor			
NU-RA6-100	Angular Rotor	6 x 100 mL	38x106
Adapters			
AFI-100R80-OAK	80mL AOR* Round Tube	6 x 80mL	38x106
AFI-100R50-C	50mL Conical Tube	6 x 50mL	30x120
AFI-100R50-OAK	50mL AOR* Round Tube	6 x 50mL	29x120
AFI-100R30-OAK	30mL AOR* Round Tube	6 x 30mL	25x120
AFI-100R15-C	15mL Conical Tube	6 x 15mL	17x121
AFI-100R10-OAK	10mL AOR* Round Tube	12 x 10mL	17x110
AFI-100R10	10mL Blood Collection Tube	12 x 10mL	17x110
AFI-100R7	5-7mL Blood Collection Tube	18 x 5/7mL	12x110
AFI-100R5	5mL MicroTube	12 x 5mL	16x55
AFI-100R2	1,5 - 2mL MicroTube	24 x 2mL	11x50

*Advanced Oak Ridge

Fixed angle rotors



Angular Rotor 8x50 - 25°



Centrifuge	Model	Maximum Speed (rpm)	Maximum RCF (x g)
AFI MultiLab	R	12.100	16.663
LOREENA	V	12.100	16.663

Cat N°	Description	Rotor capacity	Max tube Dimensions (ø x L mm)
Rotor			
NU-RA8-50	Angular Rotor	8 x 50 mL	30 x 120
Adapters			
AFI-50R50-OAK	50mL AOR* Round Tube	8 x 50mL	30 x 120
AFI-50R30-C	30mL Conical Tube	8 x 30mL	25 x 120
AFI-50R30-OAK	30mL AOR* Round Tube	8 x 30mL	25 x 120
AFI-50R15-C	15mL Conical Tube	8 x 15mL	17 x 121
AFI-50R10-OAK	10mL AOR* Round Tube	8 x 10mL	17 x 121
AFI-50R10	10mL Blood Collection Tube	8 x 10mL	17 x 121

*Advanced Oak Ridge

Angular Rotor 8x50 Sealed - 40°



Centrifuge	Model	Maximum Speed (rpm)	Maximum RCF (x g)
AFI MultiLab	R	7.600	9.090
LOREENA	V	6.700	7.065

Cat N°	Description	Rotor capacity	Max tube Dimensions (ø x L mm)
Rotor			
NU-FA8-50	Angular Rotor	8 x 50 mL	30x120
Adapters			
AFI-50R50-OAK	50mL AOR* Round Tube	8 x 50mL	30 x 120
AFI-50R30-C	30mL Conical Tube	8 x 50mL	25 x 120
AFI-50R30-OAK	30mL AOR* Round Tube	8 x 30mL	25 x 120
AFI-50R15-C	15mL Conical Tube	8 x 15mL	17 x 121
AFI-50R10-OAK	10mL AOR* Round Tube	8 x 10mL	17 x 121
AFI-50R10	10mL Blood Collection Tube	8 x 10mL	17 x 121

*Advanced Oak Ridge

Fixed angle rotors



Angular Rotor 30 x 15 - 37°



Centrifuge	Model	Maximum Speed (rpm)	Maximum RCF (x g)
AFI MultiLab	R	4.600	3.894
LOREENA	V	4.500	3.333

Cat N°	Description	Rotor capacity	Max tube Dimensions (ø x L mm)
Rotor			
NU-RA30-15	Angular Rotor	30 x 15 mL	17x121
Adapters			
AFI-15R15-C	15ml Conical Tube	30 x 15 mL	17x121
AFI-15R15-R	15ml Round Tube	30 x 15 mL	17x121
AFI-15R10-OAK	10mL AOR* Round Tube	30 x 10 mL	17x121
AFI-15R10	10mL Blood Collection Tube	30 x 10 mL	17x121
AFI-15R5	5-7mL Blood Collection Tube	30 x 5 mL	12x121

*Advanced Oak Ridge

17

Angular Rotor 16 x 5 - 45°



Centrifuge	Model	Maximum Speed (rpm)	Maximum RCF (x g)
AFI MultiLab	R	13.200	21.018
LOREENA	V	13.200	21.018

Cat N°	Description	Rotor capacity	Max tube Dimensions (ø x L mm)
Rotor			
NU-RA16-5	Angular Rotor	16 x 5 mL	16x55
Adapters			

Fixed angle rotors



Angular Rotor 48x2 - 45°



Centrifuge	Model	Maximum Speed (rpm)	Maximum RCF (x g)
AFI MultiLab	R	15500	27073
LOREENA	V	14000	22086

Cat N°	Description	Rotor capacity	Max tube Dimensions (ø x L mm)
Rotor			
NU-RA48-2	Angular Rotor	48 x 2 mL	11x50
Adapters			
AFI-48R05	0,5ml MicroTube	48 x 0.5 mL	11x50
AFI-48R025	0,25ml MicroTube	48 x 0.25 mL	11x50
AFI-48R02	0,2ml MicroTube	48 x 0.2mL	11x50

Angular Rotor 30x2 - 45°



Centrifuge	Model	Maximum Speed (rpm)	Maximum RCF (x g)
AFI MultiLab	R	16.000	28.198
LOREENA	V	15.300	25.784

Cat N°	Description	Rotor capacity	Max tube Dimensions (ø x L mm)
Rotor			
NU-RA30-2	Angular Rotor	30 x 2 mL	11x50
Adapters			
AFI-30R05	0,5ml MicroTube	30 x 0.5 mL	11x50
AFI-30R025	0,25ml MicroTube	30 x 0.25 mL	11x50
AFI-30R02	0,2ml MicroTube	30 x 0.2 mL	11x50

Fiche Technique Technical Data

LOREENA




3L /4L CENTRIFUGE



Spécifications / Specifications						
Modèle / Model	Ventilé / Ventilated		Réfrigéré / Refrigerating		Réfrigéré de sol / Refrigerating Floor	
Centrifugeuses de paillasse et de sol / Benchtop & Floor centrifuges						
Référence / Reference	AFI-C300V-E	AFI-C300V	AFI-C300R-E	AFI-C300R	AFI-C300RF-E	AFI-C300RF
Caractéristiques électriques / Electrical specifications						
Tension nominale / Nominal voltage (+/- 10%)	230 V	120 V	230 V	120 V	230 V	120 V
Fréquence / Frequency	50 / 60 Hz	60 Hz	50 Hz	60 Hz	50 Hz	60 Hz
Puissance alimentation max. / Power max.	1000 W		1700 W		1700 W	
Conformité aux directives Européennes / Compliance with European directives						
98/79/CE : Dispositifs médicaux de diagnostic in vitro / In vitro diagnostic medical devices	✓				✓	
2006/42/CE : Directive machine / Machinery directive	✓				✓	
2014/30/UE : Directive CEM / EMC directive	✓				✓	
2012/19/CE : Directive DEEE / WEEE directive	✓				✓	
2011/65/CE : Directive ROHS / ROHS Directive	✓				✓	
IEC / EN61010-1 (2010) : Sécurité / Safety	✓				✓	
IEC / EN61010-2-020 (2006) : Sécurité / Safety	✓				✓	
IEC / EN61010-2-101 (2015) : Sécurité / Safety	✓				✓	
EN61326-1(2013) : Compatib. électromagn. / EMC compatibility	✓				✓	
EN55011 2009/A1 (2010) Classe A : Perturbations / Emissions	✓				✓	
EN ISO 14971 (2012) : Gestion des risques / Risk management	✓				✓	
ISO 9001 (2015) : Gestion des risques / Risk management	✓				✓	
ISO 13485 (2016) : Gestion des risques / Risk management	✓				✓	
Caractéristiques principales (voir brochure) / Main specifications (see brochure for full specification)						
Rotors Swing-out / Swing-out rotors 	Capacité max. / Max. capacity	rotor RX1000	4X1000 ml			
	RPM max.	rotor RX750	4500 rpm	4600 rpm	4600 rpm	
	ACR max / Max. RCF	rotor RX750	4526 g	4731 g	4731 g	
Rotors Microplaques Microplate rotors 	Capacité max. / Max. capacity	rotor RX750	4x4 microplaques ; 4x1 plaques Deepwell 4x4 microplates ; 4x1 Deepwell plates			
	RPM max.	rotor RHDW	4500 rpm	4600 rpm	4600 rpm	
	ACR max / Max. RCF	rotor RHDW	3531 g	3690 g	3690 g	
Rotors Angulaires / Fixed angle rotors 	Capacité max. / Max. capacity	rotor RA6-250	6X250 ml			
	RPM max.	rotor RA30-2 rotor RA48-2	15200 rpm	15200 rpm	15200 rpm	
	ACR max / Max. RCF	rotor RA30-2	25578 g	25578 g	25578 g	
Confinement biologique / Biocontainment			✓			
Dimensions & poids / Dimensions & Weight						
Dimensions (HxLxL)/Footprint Dimensions(HxWxD)	37 x 50 x 61 cm		35 x 77 x 63 cm		83 x 57 x 64 cm	
Dimensions emballage (HxLxL) / Package dimension (HxWxD)	54 x 74 x 77 cm		54 x 90 x 80 cm		100 x 80 x 80 cm	
Hauteur couvercle ouvert / Opened lid height	85 cm		88 cm		139 cm	
Poids net (Hors rotor) / Weight unpacked (Without rotor)	82 kg		145 kg		170 kg	
Poids emballé / Weight packed	97 kg		160 kg		185 kg	



Description de la centrifugeuse / Centrifuge description

Référence / Reference	AFI-C300V-E	AFI-C300V	AFI-C300R-E	AFI-C300R	AFI-C300RF-E	AFI-C300RF
Ecran graphique tactile 4.3", couleur 4.3" graphic color screen				✓		
Commandes / Commands	Touches et écran tactile Buttons and touchscreen					
Contrôle par microprocesseur / Microprocessor control				✓		
Fixation de rotor sans outil / Toolless rotor fixing				Système "ClickSpin®"		
Reconnaissance automatique du rotor / Automatic rotor recognition				✓		
Détection de balourd / Imbalance detection	Auto-apprentissage environnement de travail - Mesure continue de la vibration / Working area auto-calibration - Continuous vibration measurement					
Mode économie d'énergie / Energy saving mode	Mode "Postcool" désactivable / Desactivable "Postcool" mode					
Fermeture motorisée du couvercle / Motorized lid closing				✓		
Durées de cycle / Cycle duration	10 s à 99h : 59 min : 59 s / Cycle continu / Impulsion 10 s to 99h : 59 min : 59 s / Continuous cycle / Pulse					
Unités de température / Temperature units	°C / °F					
Chambre de centrifugation / Centrifugation chamber	Inox					
Densité max. / Max. density	1.2 g/ cm ³					
Moteur à induction sans charbon / Brushless induction motor				✓		
Précision de vitesse / Speed accuracy	± 0.5%					
Nombre de programmes / Programs number		99		99 + 2		99 + 2
Pentes d'accélération & de freinage Acceleration & Braking slopes	10 & 10					
Décélération libre / Brakeless mode				✓		
Ouverture d'urgence / Emergency opening				✓		
Alarme sonore / Sound alarm				✓		
Système de réfrigération / Cooling system		Ventilation / Ventilation device		Sans CFC / Without CFC		Sans CFC / Without CFC
Plage de réglage en température / Range of setting temperature		N/A		-10°C → +40°C		-10°C → +40°C
Fonction de pré-refroidissement Precool functio		N/A		✓		✓
Précision en temperature / Temperature accuracy		N /A		+/- 2°C		+/- 2°C
Dissipation de chaleur maximale / Heat dissipation		3413 BTU/h		5801 BTU/h		5801 BTU/h
Niveau sonore max. / Max. noise		≤ 61 dB (A)		≤ 60 dB (A)		≤ 57 dB (A)



ATALIA
Certification

ISO 13485 : 2016
N° ATA 028/2017



ATALIA
Certification

ISO 9001 : 2015
N° ATA 032/2017

- Should it be necessary or useful without undermining any model essential features, technical and stylistic characteristics are subject to be changed without manufacturer's previous notice.

M A D E I N F R A N C E

CONTROLTECNICA

DISTRIBUIDOR EN ESPAÑA
C/ARTESANOS, 7 BOADILLA
TLF: 917280810
lab@controltecnica.com