

Centrifugal Vacuum Concentrator

MINIVAC



GYROZEN®

**MiniVac systems** offer rapid, environmental friendly and efficient vacuum concentration or drying of DNA/RNA samples with ease and reproducibility whilst maintain sample integrity. Easy to use automatic system includes timer, start/stop function, vacuum control, adjustable chamber temperature to 80°C, digital readout of vacuum, and programming facility. Modular design for easy upgrade.

## | Technical Specifications

	MiniVac
Cat. No.	GZ-V2124
Auto/start stop	Yes
Timer function	Yes
Pressure readout	1~1,013 mBar
RPM adjustable	0~2,000
Centrifuge Dimension (W x D x H, mm)	375 x 445 x 252
Heating Range (°C)	+5~+80
Pump down capacity (L/min)	15
Pump capacity	20 mBar at 25°C & 6 mBar at 0°C
Power consumption, Centrifuge only (VA)	350
Voltage (V/Hz)	230/50~60

## | Ordering Information



Cat. No.	Product
GZ-V2124	MiniVac Centrifuge including Angle Rotor, GRV-m2.0/0.5-124 (220V 50/60Hz)
GZ-MKM	Drip catcher kit for MiniVac and MaxiVac
Diaphragm Pump (Vacuum pump)	Please supply it locally

\* Please ask to local VacuuBrand distributor for pumps. Or you can use local brand pump for MiniVac and MaxiVac.

## Angle Rotor, GRV-m0.5/2.0-124

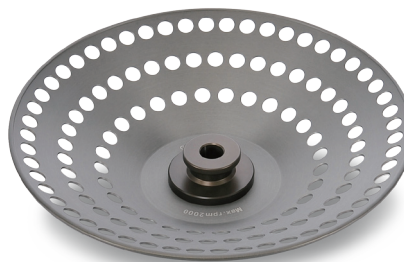
48 x 1.5/2.0 ml + 76 x 0.5 ml  
 ∟ 30.4°  
 Hole diameter (mm) : 11.1 / 8




Tube		
Tube capacity (ml)	1.5/2.0	0.5

## Angle Rotor, GRV-m2.0-120

120 x 1.5/2.0 ml  
 ∟ 30.4°  
 Hole diameter (mm) : 11.1





Tube	
Tube capacity (ml)	1.5/2.0

## Angle Rotor, GRV-50-6

6 x 50 ml / 50 ml conical  
 ∟ 50°  
 Hole diameter (mm) : 30.4



Tube		
Tube capacity (ml)	50	50 ml conical



Sleeve  
**GLV-50**  
 Sleeve bore (∅x L, mm) : 30.4 x 101





Sleeve  
**GLV-c50**  
 Sleeve bore (∅x L, mm) : 30.4 x 101

**Angle Rotor, GRV-15-12**

12 x 15 ml / 15 ml conical  
⌢ 50°  
Hole diameter (mm) : 18.4



Tube		
Tube capacity (ml)	15	15 ml conical




Sleeve
<b>GLV-15</b>
Sleeve bore (Φx L, mm) : 18.4 x 91



**Swing Rotor, GRV-mw-2**

2 loadings of microplate  
⌢ 90°  
Area dimension (mm) : 88.5 x 130.3



Tube	
Tube capacity (ml)	MTP